



Building Bright Futures Early Childhood Data Reporting System (ECDRS)

VT House Education Committee
April 8, 2014



ECDRS Vision

ECDRS will be an integrated online toolbox that equips Vermonters to leverage meaningful data for the well-being of children, families and communities.



First Sketch v1.1

Presented to BBF Council April 23, 2012



[Give us your feedback](#)

Building Bright Futures Early Childhood Data Reporting System

Building Bright Futures Early Childhood Data Reporting System is a comprehensive, longitudinal data system to track results and drive continued improvement. The end goal is meaningful data that can be used to support sound decision making so that children's health, development and learning flourishes.

Policy Questions

Click here to find critical child and family policy questions confronting Vermont's policymakers and guide the development of Vermont's Early Childhood Data Reporting System. The policy questions mirror the Building Bright Futures commitment statements, priority objectives and regional planning work and are grounded in Vermont's longstanding State Outcomes

Socio-Demographic Topics

Click here to find data on key socio demographic topics that are critical to effective policy and planning efforts. It includes population data as well as socio-economic data such as income and family structure.



V1.2

Stakeholder Mtg. November 15, 2012

Infrastructure in Place... Where We Are Now...



Foundations, Framing in Place & One Unit Completed...





Working Prototype... Where We Are Now



7



From Original Concept ...To Where We Are Now...



BUILDING BRIGHT FUTURES
DATA REPORTING SYSTEM

[BBF HOMEPAGE](#) | [LOGIN](#) |

WORKING PROTOTYPE version 1.3 PRODUCTION

[HOME](#)

[ABOUT](#)

[CONNECT AND EXCHANGE](#)

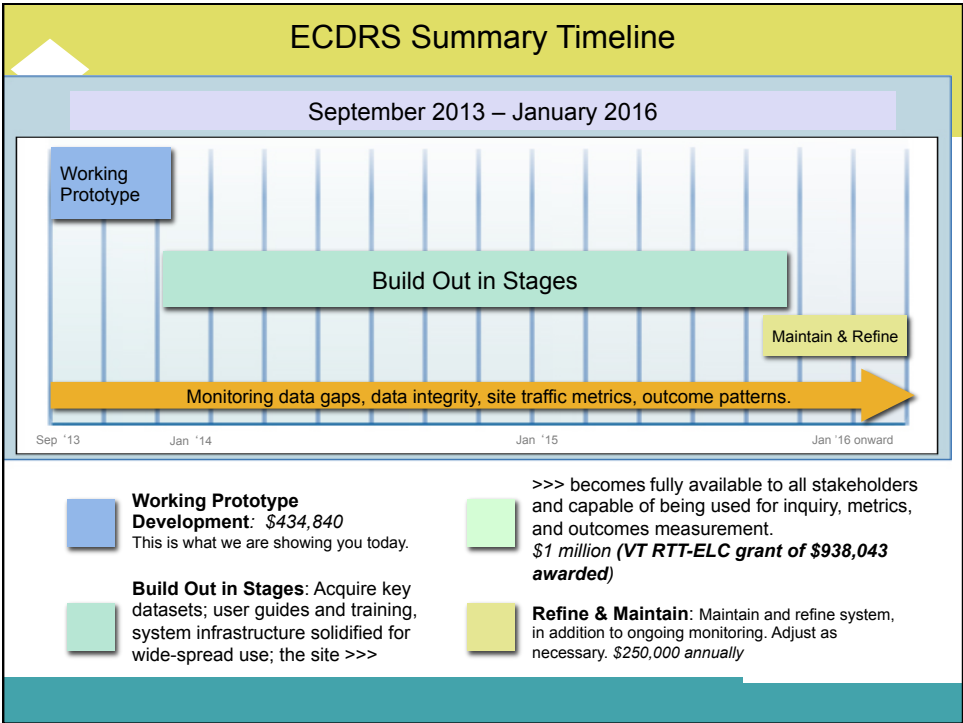
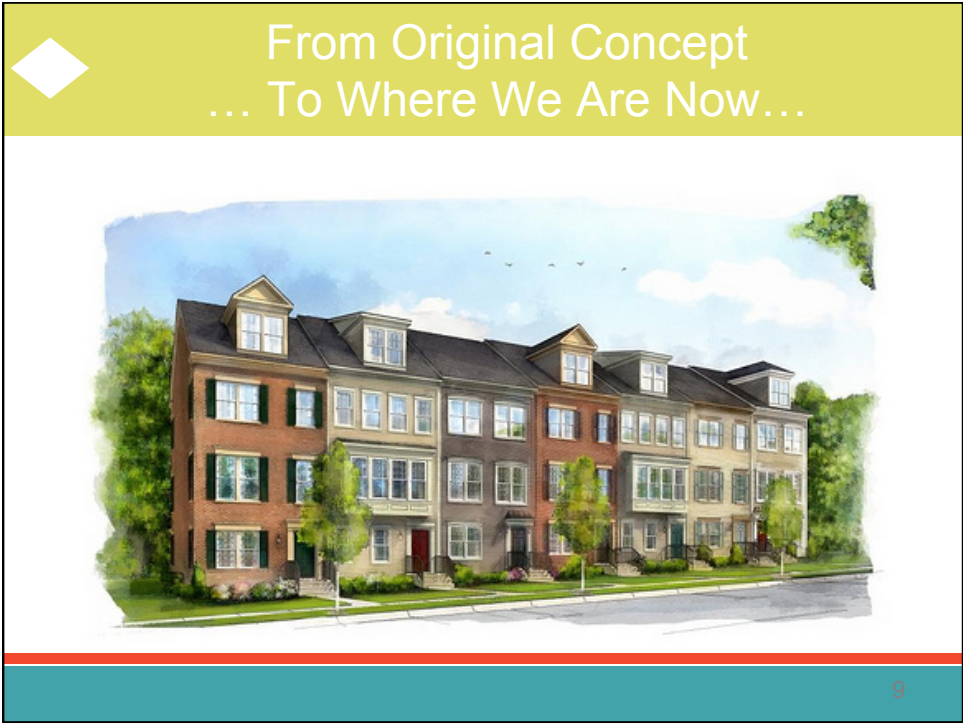
[DATA CATALOG](#)

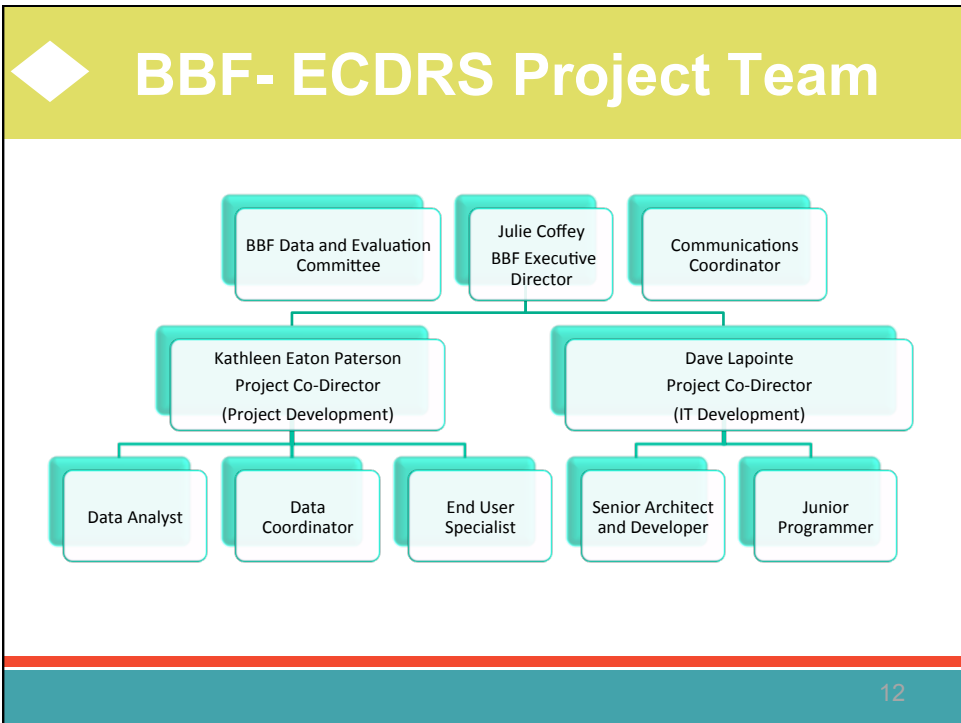
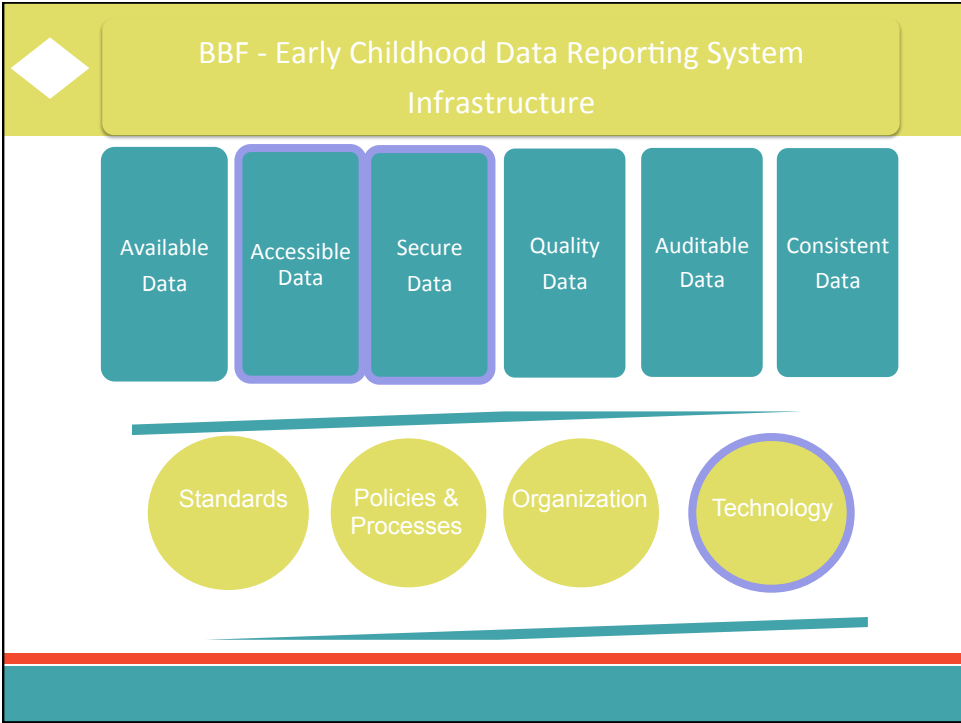
[FEEDBACK-CONTACT](#)

Leveraging meaningful data to continuously inform, shape and improve efforts that promote the well-being of Vermont's children, families and communities.



8





Quick Tour <http://bbfdata.com/>

BUILDING BRIGHT FUTURES
DATA REPORTING SYSTEM

BBF HOMEPAGE | LOGIN |

WORKING PROTOTYPE version 1.3 PRODUCTION

HOME ABOUT CONNECT AND EXCHANGE DATA CATALOG FEEDBACK-CONTACT

Leveraging meaningful data to continuously inform, shape and improve efforts that promote the well-being of Vermont's children, families and communities.

POLICY QUESTIONS

DEMOGRAPHICS

INDICATORS

13

Where We Are Now: Datasets

Now	Future Examples
<i>All Regulated Care And Education Programs</i>	<i>Kindergartners Readiness Survey Dataset [in progress]</i>
<i>National Accreditation Awards For All Regulated Care And Education Programs</i>	<i>Composition And Qualifications Of Early Childhood Workforce [In Progress]</i>
<i>Identification Of Head Start Program Or Partner, Early Head Start Program Or Partner Regulated Care And Education Programs (SY 2012-2013)</i>	<i>Child, Family And Community Socio-Demographic Datasets From The American Community Survey [in progress]</i>
<i>Identification Of Publicly Funded Pre-k (Act 62) Regulated Care And Education Programs (SY 2011-2012)</i>	<i>Child Health Profile Dataset (Birth Outcomes, Immunization, Lead, Vision And Hearing And Developmental Screening And Referral Outcomes)</i>
<i>Students Eligible For Free And Reduced Price School Meals School Years (SY 2007/08-2011/12)</i>	<i>Promotion, Prevention and Early Intervention Datasets (Nutrition and Fitness, Child Abuse And Neglect, Economic Benefits, Children's Integrated Services, Special Education)</i>
<i>Child, Youth, Adult And Elderly Population Single Year Age Counts And Percentages In Vermont (Census 2010)</i>	<i>Enrollment, Attendance And Developmental Progress Dataset In Publicly Funded Care And Education Programs (Pre-k Act 62; Early Head Start And Head Start; Child Care Subsidy)</i>
<i>Ratio Of Income To Federal Poverty Level (FPL), By Vermont, County And Age Groups (5 Year ACS)</i>	<i>K-grade 3 Enrollment, Attendance And Developmental Progress Dataset</i>

14

◆ Making ECDRS work for you

1. As a legislator you can help make meaningful data available.

15

◆ Making ECDRS work for you

2. As the House Education Committee help us build a system that works for you.

As House Education Committee end users, I want to _____ so that I can _____.

Example: I as a member of the House Education Committee want to create a community profile of my legislative district so that I can XYZ.

16



More Information

ECDRS Working Prototype url: <http://bbfdata.com/>

ECDRS Project Co-Directors:

Kathleen Paterson, KEP Consulting, katheatonpaterson@gmail.com

Dave Lapointe, cTechnica, dave@ctecnica.com

BBF Data and Evaluation Committee Co-Chairs

Ben Allen: ben.allen@state.vt.us

Jim Squires: squiresjames@aol.com

Committee webpage: <https://sites.google.com/a/buildingbrightfutures.org/bbf-data-and-evaluation-committee/>

BBF website page for ECDRS: <http://buildingbrightfutures.org/initiatives/child-family-well-being-indicators-data-system/>